

## Overexpression of IL-1 receptor accessory protein in stem and progenitor cells and outcome correlation in AML and MDS

Laura Barreyro,<sup>1</sup> Britta Will,<sup>1</sup> Boris Bartholdy,<sup>1</sup> Li Zhou,<sup>2</sup> Tihomira I. Todorova,<sup>1</sup> Robert F. Stanley,<sup>1</sup> Susana Ben-Neriah,<sup>3,4</sup> Cristina Montagna,<sup>5-7</sup> Samir Parekh,<sup>1,7,8</sup> Andrea Pellagatti,<sup>9</sup> Jacqueline Boultonwood,<sup>9</sup> Elisabeth Paietta,<sup>7,8</sup> Rhett P. Ketterling,<sup>10</sup> Larry Cripe,<sup>11</sup> Hugo F. Fernandez,<sup>12</sup> Peter L. Greenberg,<sup>13</sup> Martin S. Tallman,<sup>14</sup> Christian Steidl,<sup>3,4</sup> Constantine S. Mitsiades,<sup>15,16</sup> Amit Verma,<sup>2,7,8</sup> and Ulrich Steidl<sup>1,7,8</sup>

Departments of <sup>1</sup>Cell Biology and <sup>2</sup>Developmental and Molecular Biology, Albert Einstein College of Medicine, Bronx, NY; <sup>3</sup>Centre for Lymphoid Cancer, British Columbia Cancer Agency and <sup>4</sup>Department of Pathology and Laboratory Medicine, University of British Columbia, Vancouver, BC; Departments of <sup>5</sup>Genetics and <sup>6</sup>Pathology, Albert Einstein College of Medicine, Bronx, NY; <sup>7</sup>Albert Einstein Cancer Center, Albert Einstein College of Medicine, Bronx, NY; <sup>8</sup>Department of Medicine (Oncology), Albert Einstein College of Medicine, Bronx, NY; <sup>9</sup>Leukaemia & Lymphoma Research Molecular Haematology Unit, Nuffield Department of Clinical Laboratory Sciences, John Radcliffe Hospital, Oxford, United Kingdom; <sup>10</sup>Department of Laboratory Medicine and Pathology, Mayo Clinic College of Medicine, Rochester, MN; <sup>11</sup>Indiana University Simon Cancer Center, Indianapolis, IN; <sup>12</sup>Moffitt Cancer Center and Research Institute, Tampa, FL; <sup>13</sup>Hematology Division, Stanford University Cancer Center, Stanford, CA; <sup>14</sup>Leukemia Service, Department of Medicine, Memorial Sloan-Kettering Cancer Center, New York, NY; <sup>15</sup>Department of Medical Oncology, Dana-Farber Cancer Institute, Boston, MA; and <sup>16</sup>Department of Medicine, Harvard Medical School, Boston, MA

**Cellular and interpatient heterogeneity and the involvement of different stem and progenitor compartments in leukemogenesis are challenges for the identification of common pathways contributing to the initiation and maintenance of acute myeloid leukemia (AML). Here we used a strategy of parallel transcriptional analysis of phenotypic long-term hematopoietic stem cells (HSCs), short-term HSCs, and granulocyte-monocyte progenitors from individuals with high-risk (-7/7q-) AML and compared them with the corre-**

**sponding cell populations from healthy controls. This analysis revealed dysregulated expression of 11 genes, including IL-1 receptor accessory protein (IL1RAP), in all leukemic stem and progenitor cell compartments. IL1RAP protein was found to be overexpressed on the surface of HSCs of AML patients, and marked cells with the -7/7q- anomaly. IL1RAP was also overexpressed on HSCs of patients with normal karyotype AML and high-risk myelodysplastic syndrome, suggesting a pervasive role in different disease sub-**

**types. High IL1RAP expression was independently associated with poor overall survival in 3 independent cohorts of AML patients ( $P = 2.2 \times 10^{-7}$ ). Knockdown of IL1RAP decreased clonogenicity and increased cell death of AML cells. Our study identified genes dysregulated in stem and progenitor cells in -7/7q- AML, and suggests that IL1RAP may be a promising therapeutic and prognostic target in AML and high-risk myelodysplastic syndrome. (*Blood*. 2012;120(6):1290-1298)**

### Introduction

Acute myeloid leukemia (AML) and myelodysplastic syndromes (MDSs) are heterogeneous neoplastic diseases, and most subtypes have poor clinical outcomes. Despite the established use of poly-chemotherapy and the development of new agents that transiently reduce the tumor burden, relapse or failure to achieve durable remission continues to be the most common causes of death in most subtypes of AML and MDS. Recent experimental evidence suggests that AML arises from transformed immature hematopoietic cells after the accumulation of multiple stepwise genetic and epigenetic changes in hematopoietic stem cells (HSCs) and committed progenitors.<sup>1</sup> The series of transforming events are thought to initially give rise to preleukemia stem cells (pre-LSCs), preceding the formation of fully transformed LSCs. Defining the characteristics of LSCs, and also of pre-LSCs, is critical to understanding the genesis of leukemia and to developing strategies by which these cells can be eradicated. AML is characterized by a cellular heterogeneous tumor bulk, with LSCs at the top of the hierarchy and a differentiation block at various stages during

myeloid maturation.<sup>2</sup> To address the problem of cellular heterogeneity within the tumor and to identify relevant molecular pathways effective in LSCs and pre-LSCs, novel experimental approaches other than the examination of bulk tumor cells need to be established. Recent findings have suggested that human LSCs are contained within different phenotypic compartments and at relatively low frequencies.<sup>3-5</sup> Several surface molecules were reported to permit enrichment of LSCs in AML.<sup>4,6-11</sup> However, reliable markers for human LSCs at the single-cell level have yet to be identified; and because of the challenges associated with the use of xenograft models, the search for such markers remains difficult. Moreover, although there is clear evidence for the involvement of HSCs in AML pathogenesis, studies from murine models suggest that fully transformed and transplantable LSCs may reside at a committed progenitor stage.<sup>12-15</sup> Here we applied a novel approach of parallel transcriptional analysis of multiple, highly fractionated stem and progenitor populations in individual patients. We isolated phenotypic long-term HSCs (LT-HSCs), short-term HSCs (ST-HSCs),

Submitted January 19, 2012; accepted June 12, 2012. Prepublished online as *Blood* First Edition paper, June 21, 2012; DOI 10.1182/blood-2012-01-404699.

The publication costs of this article were defrayed in part by page charge payment. Therefore, and solely to indicate this fact, this article is hereby marked "advertisement" in accordance with 18 USC section 1734.

The online version of this article contains a data supplement.

© 2012 by The American Society of Hematology

and committed granulocyte-monocyte progenitors (GMP) from individual patients with AML, and compared gene expression profiles of each population with their phenotypic counterparts from age-matched healthy controls (HCs). Subsequent intersection of differentially expressed genes in the different cellular compartments allowed us to identify candidate genes that are consistently dysregulated at multiple immature stem and progenitor cell stages. Therapeutic targeting of these commonly dysregulated genes may be efficient at relevant pre-LSC stages as well as LSCs. To reduce experimental variation for transcriptional analysis and candidate target identification because of interpatient heterogeneity, we initially focused our study on a genetically defined subset of AML; AML with complete loss ( $-7$ ) or deletions of the long arm of chromosome 7 ( $7q-$ ) as the sole cytogenetic aberration. Monosomy 7 is the most common numerical chromosomal aberration found as a sole abnormality in AML<sup>16</sup> and the second most frequent in MDS,<sup>17</sup> and displays poor response to chemotherapy and an adverse prognosis. Moreover, the molecular pathogenesis of AML with  $-7/7q-$  is largely unknown.

Using our novel strategy, we report the identification of 11 genes that are commonly dysregulated in LT-HSCs, ST-HSCs, and GMP of patients with AML with  $-7/7q-$ . We show that one of the top differentially expressed genes, IL-1 receptor accessory protein (*IL1RAP*), is aberrantly expressed on the surface of clonotypic stem and progenitor cells of AML patients with  $-7/7q-$ . We also found *IL1RAP* overexpression in stem cells of a subset of AML patients with normal karyotype, and of patients with high-risk MDS, and show that high levels of *IL1RAP* are independently associated with poor overall survival in 3 independent clinical cohorts. Functional studies showed that down-regulation of *IL1RAP* inhibited the clonogenic capacity of AML cells and led to increased apoptosis. Our study suggests that *IL1RAP* is dysregulated in stem and progenitor cells in AML and high-risk MDS and that it may be a promising novel therapeutic and prognostic target.

## Methods

### Patient samples and cell lines

BM samples from 16 patients with AML at initial diagnosis were obtained from the Eastern Cooperative Oncology Group (ECOG) within the framework of routine diagnostic bone marrow aspirations after written informed consent in accordance with the Declaration of Helsinki (for patients' characteristics, see supplemental Table 1, available on the *Blood* Web site; see the Supplemental Materials link at the top of the online article). BM samples from 7 MDS patients were obtained from Einstein/Montefiore Medical Center (supplemental Table 3). All experiments were approved by the Institutional Review Board of the Albert Einstein College of Medicine (CCI#2008-942). Healthy BM specimens were obtained from Stem Cell Technologies (supplemental Table 4). The AML cell lines THP-1, HL-60, and HEL were grown in RPMI medium supplemented with 10% FBS and 1% penicillin/streptomycin. OCI-AML3 cells were grown in  $\alpha$ -MEM medium supplemented with 20% FBS and 1% penicillin/streptomycin.

### Multiparameter high-speed FACS of stem and progenitor cells

To purify the stem and progenitor compartments from total BM of AML or MDS patients, samples were processed as follows: Frozen BM aspirates were quickly thawed in a water bath at 37°C and resuspended in IMDM supplemented with 2% FBS. After repeated washes with IMDM 2% FBS, cells were resuspended in MACS buffer (PBS supplemented with 0.5% BSA and 2mM EDTA, pH 7.2). CD34<sup>+</sup> cells were immunomagnetically selected from mononuclear cells from AML patients and healthy donors using

Miltenyi MACS technology (130-046-702, Miltenyi Biotec) according to the manufacturer's protocol. Afterward, cells were stained for 30 minutes on ice with PE-Cy5-conjugated antibodies against lineage antigens (CD2[RPA-2.10], CD3[UCHT1], CD4[S3.5], CD7[6B7], CD8[3B5], CD10[CB-CALLA], CD11b[VIM12], CD14[TueK4], CD19[HIB19], CD20[2H7], CD56[MEM-188], Glycophorin A[CLB-ery-1(AME-1)], and hematopoietic stem and progenitor markers (APC-conjugated CD34[581/CD34(class III epitope)], PE-CY7-conjugated CD38[HIT-2], FITC-conjugated CD45RA[MEM-56], PE-conjugated CD123[6H6] and APC-Cy7-conjugated CD90[5E10]) to distinguish LT-HSCs (Lin<sup>-</sup>/CD34<sup>+</sup>/CD38<sup>-</sup>/CD90<sup>+</sup>), ST-HSC (Lin<sup>-</sup>/CD34<sup>+</sup>/CD38<sup>-</sup>/CD90<sup>-</sup>), and GMP (Lin<sup>-</sup>/CD34<sup>+</sup>/CD38<sup>+</sup>/CD123<sup>+</sup>/CD45RA<sup>+</sup>). After staining, cells were washed with MACS buffer and subjected to 7-color sorting using a FACSAria II Special Order System (BD Biosciences) as previously described.<sup>18</sup> Cells were sorted directly into RLT plus buffer (QIAGEN) for RNA extraction. For some experiments, we sorted and used total myeloid "progenitors" (where indicated) defined as Lin<sup>-</sup>CD34<sup>+</sup>CD38<sup>+</sup>.

### RNA amplification and genome-wide transcriptional analysis

Total RNA was extracted from sorted LT-HSC, ST-HSC, and GMP populations from AML patients and HCs using a denaturing buffer containing guanidine isothiocyanate (ALLPrep Micro Kit, QIAGEN). After checking the quality of RNA with an Agilent 2100 Bioanalyzer, total RNA was amplified using the Single Primer Isothermal Amplification (SPIANugen Ovation pico WTA) system according to the manufacturer's instructions. After labeling with the GeneChip WT terminal labeling kit (Affymetrix), labeled cRNA of each individual sample was hybridized to GeneChip Human Gene 1.0 ST microarrays (Affymetrix), stained, and scanned by GeneChip Scanner 3000 7G system (Affymetrix) according to standard protocols. The complete array data are deposited in the gene expression omnibus database ([www.ncbi.nlm.nih.gov/geo/](http://www.ncbi.nlm.nih.gov/geo/); accession no. GSE35008 and GSE35010) according to MIAME standards. Array data were normalized in Expression Console 1.2 software from Affymetrix using Robust Multichip Average. Normalized data were analyzed in MeV Version 4.7.3 software,<sup>19</sup> for differential gene expression between groups using Welch *t* test with a significance level of  $P < .05$ . Genes with an absolute value of the group mean difference equal or greater than 1.5 (log<sub>2</sub> scale) and  $P$  values  $< .05$  were called as differentially expressed between groups. Gene expression differences between LT-HSC, ST-HSC, and GMP groups in  $-7/7q-$  AML samples were assessed with 1-way ANOVA ( $P$  value distribution based on 1000 permutations,  $P$  value cut-off of .01). Principal component analysis based on differentially expressed genes between the  $-7$  AML stem and progenitor populations was carried out in MeV using default parameters. A view of these 3 populations within the  $-7$  AML group as well as within both the  $-7$  AML group and healthy LT-HSC, ST-HSC, and GMP populations is shown in supplemental Figure 3.

### Quantitative real-time RT-PCR and detection of *IL1RAP* protein by flow cytometry

*IL1RAP* mRNA expression was corroborated by quantitative RT-PCR (forward, 5'-TGCAITCTTTGACCGAGACAG-3'; reverse, 5'-CGGCTGAAA-ATGCAGAAA-3') using complementary DNA (cDNA) amplified from total RNA with the WT-Ovation RNA Amplification System (Nugen) and unamplified cDNA with SYBR Green on iQ5real-time PCR instrument (Bio-Rad). Abundance of each transcript was calculated using the Pfaffl method.<sup>20</sup> *IL1RAP* expression was validated at the protein level by flow cytometry in a FACSAria II Special Order System (BD Biosciences) using a biotinylated *IL1RAP* antibody (R&D Systems) and streptavidin APC-AlexaFluor-750 conjugate (SA1027, Invitrogen) as a secondary antibody. For flow cytometry, AML patient and HC samples were processed as described in "Multiparameter high-speed FACS of stem and progenitor cells" with the addition of *IL1RAP* antibody. Biotinylated normal goat IgG antibody (BAF108, R&D Systems) was used as isotype control.

### FISH

*IL1RAP*-positive and -negative populations were sorted directly onto polylysine-coated slides. The cells on the slides were fixed in Carnoy

solution. The following dual-color probe (Abbott Molecular) was used to detect monosomy 7/7q deletions: LSI D7S522 (7q31) SpectrumOrange/CEP7 SpectrumGreen. FISH was performed according to the manufacturer's instructions. Cells were counterstained with 4',6-diamidino-2-phenylindole (DAPI) and examined at room temperature on a Zeiss Axioplan 2 fluorescence microscope with a Plan-APOCHROMAT 100×/1.4 oil objective. The images were acquired using a CV-M9+CL camera (JAI) and MetaSystems Isis software (Version 5.4.9). The frequency of false-positive signal loss for the used FISH probe was established by hybridization to cytospin preparations of normal hematopoietic stem and progenitor populations and myeloblasts. For the purpose of this study, the cut-off value for true signal loss, corresponding to monosomy 7/7q deletion, was set at > 10%, counting 100 nuclei per slide.

### Lentiviral vectors and transduction

For knockdown studies, shRNA template oligonucleotides (supplemental Table 5) were cloned into the pSIH1-H1-copGFP shRNA vector (System Biosciences). For production of lentiviral particles, lentiviral shRNA expression constructs were transfected together with packaging vectors into 293T producer cells using Fugene HD transfection reagent (Roche Diagnostics), supernatants were harvested after 48 and 72 hours, and concentrated by ultracentrifugation. The THP1, OCI-AML3, HL-60, and HEL cell lines were transduced with the short-hairpin-containing lentivirus (MOI = 10-15). After culture with fresh medium, GFP-positive cells were sorted 48 to 72 hours after infection using a FACSria II sorter (BD Biosciences) and used for experiments. IL1RAP knockdown efficiency was determined by flow cytometry and quantified as described elsewhere.<sup>21</sup>

### Flow cytometric determination of apoptosis and clonogenic assays

To determine viability after IL1RAP knockdown,  $1 \times 10^6$  AML cells were washed with PBS and mixed with prediluted PE-conjugated annexin V (BD Pharmingen) and DAPI. Cells were stained at room temperature for 15 minutes and resuspended in 0.5 mL of annexin V-FLUOS incubation buffer (Roche Diagnostics) for analysis. Annexin V-/DAPI- cells were sorted and plated in methylcellulose (StemCell Technologies H4434, or R&D Systems HSC002SF) at 1000 cells/mL in 6-well plates. Cells were incubated at 37°C and 5% CO<sub>2</sub>. Colonies were scored after 7 days in culture.

### Cell cycle analysis

Cell cycle analysis was performed as previously described.<sup>22</sup> In brief,  $1 \times 10^6$  THP-1 cells were rinsed with ice-cold PBS, incubated 45 minutes at 37°C in the dark with 0.5 mL Hoechst buffer (20 µg/mL Hoechst 33342 in Hanks balanced salt solution containing 10% FBS, 20mM HEPES, pH 7.2, 1 g/L glucose, and 50 µg/mL verapamil (Sigma-Aldrich). Pylonin Y (Sigma-Aldrich) was added at 1 µg/mL, and cells were incubated for 15 minutes at 37°C in the dark, washed with PBS, and analyzed by flow cytometry using a FACSria II Special Order System (BD Biosciences).

### Gene expression and survival analysis

We analyzed publicly available gene expression datasets from human AML studies with the accession numbers GSE12417 (training set hybridized to Affymetrix U133A and U133B microarrays; test set to U133plus2.0) and GSE10358 (U133plus2.0). CEL files were downloaded from GEO and processed using GenePattern (Broad Institute) for normalization (ExpressionFileCreator algorithm) according to the preset parameters of the software (Robust Multichip Average method, with quintile normalization, background correction, median scale normalization method) and collapsing (using CollapseDatset with default parameters). All aforementioned datasets were then analyzed separately to dichotomize the population of patients of each dataset into subsets with high versus low expression of *IL1RAP* transcript, using the 75th percentile of normalized *IL1RAP* expression in each dataset as the cut-off point. Publicly available clinical annotation accompanying each one of these datasets was then used to perform Kaplan-Meier survival analysis (GraphPad Prism Version 5.0) comparing

clinical outcomes of patients with high versus low *IL1RAP* expression. Multivariate analysis with stepwise forward and backward model selection by Akaike Information Criterion was performed in R/Bioconductor using the survival and MASS packages. The model parameters included *IL1RAP* status, French-American-British subclass, FLT3 mutation status, age, sex, and cytogenetic risk. *IL1RAP* gene expression comparisons between CD34<sup>+</sup> cells from healthy donors and patients with chromosome 7 deletions were carried out using the published GSE14468 patient data. CEL files from del(7) patients (n = 18) and HCs (n = 11) were Robust Multichip Average-normalized, and log<sub>2</sub>-transformed *IL1RAP* expression was plotted. We analyzed gene expression data and clinical information from 183 MDS CD34<sup>+</sup> cells and 17 controls.<sup>23</sup> *IL1RAP* expression was represented as scatter plots using GraphPad Prism Version 5.0 software.

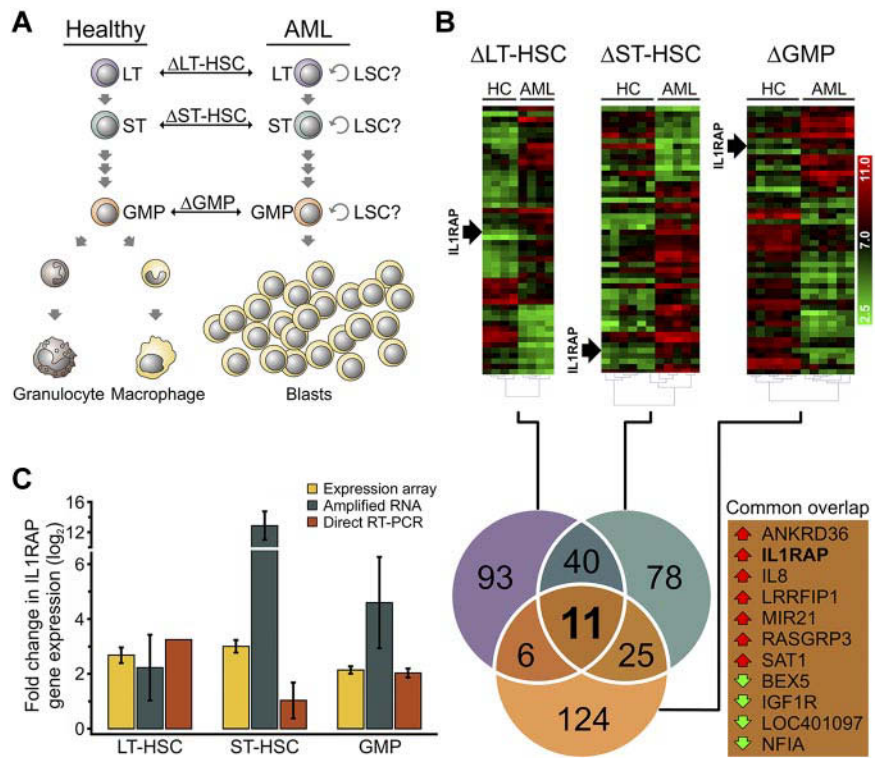
## Results

### Identification of genes consistently dysregulated in multiple distinct stem and progenitor cell compartments in patients with AML

In this study, we carried out gene expression analysis of highly fractionated stem and progenitor cell compartments from individual patients with AML with monosomy 7 (−7) or deletions of the long arm of chromosome 7 (7q−) as the sole cytogenetic aberration compared with phenotypically identical cell populations from age-matched HCs, in an attempt to reduce interpatient as well as cellular heterogeneity. Specifically, we sorted and analyzed Lin<sup>−</sup>CD34<sup>+</sup>CD38<sup>−</sup>CD90<sup>+</sup> cells (referred to as LT-HSCs), Lin<sup>−</sup>CD34<sup>+</sup>CD38<sup>−</sup>CD90<sup>−</sup> cells (referred to as ST-HSCs), and Lin<sup>−</sup>CD34<sup>+</sup>CD38<sup>+</sup>CD123<sup>+</sup>CD45RA<sup>+</sup> cells (referred to as GMPs), using previously established marker schemes<sup>18,24-26</sup> (supplemental Figure 1; supplemental Table 2). We included rigorous lineage depletion in our strategy to avoid analysis of the leukemic bulk (blast) population and to focus on the earliest known stem cell and committed myeloid progenitor populations in humans. Lineage depletion eliminated an additional 70% to 90% of cells from the stem and progenitor gates (supplemental Figure 2). To identify genes dysregulated within the distinct stem and progenitor cell compartments of AML patients, we used Affymetrix GeneST 1.0 arrays to compare gene expression with the respective HCs at each cellular level (AML-LT-HSCs vs HC-LT-HSCs, AML-ST-HSCs vs HC-ST-HSCs, and AML-GMPs vs HC-GMPs; Figure 1A). We found significant differences in gene expression (> 1.5-fold change; *P* < .05) in all examined compartments (Figure 1B). In LT-HSCs, 150 genes were differentially expressed (115 up-regulated, 35 down-regulated); in ST-HSCs, 154 genes were differentially expressed (90 up-regulated, 64 down-regulated); and in GMPs, 166 genes were differentially expressed (35 up-regulated, 131 down-regulated; supplemental Table 6). We then compared differentially expressed genes in each individual compartment ( $\Delta$ LT-HSCs,  $\Delta$ ST-HSCs,  $\Delta$ GMPs) with each other to identify genes that were altered in all examined stem and progenitor compartments in AML patients. Using this intersection analysis, we found 11 genes that were consistently dysregulated in AML versus HC in all examined stem and progenitor compartments (Figure 1B).

Of note, AML-LT-HSCs, AML-ST-HSCs, and AML-GMPs clearly separated in a principal component analysis (supplemental Figure 3A). Furthermore, when we included LT-HSCs, ST-HSCs, and GMPs of age-matched HC in the principal component analysis, we found that they clustered with the respective AML populations, suggesting that AML-LT-HSCs, AML-ST-HSCs, and AML-GMPs are overall molecularly comparable with their normal counterparts

**Figure 1. Transcriptional profiling of phenotypic hematopoietic stem and progenitor compartments of AML patients with monosomy 7 identifies overexpression of *IL1RAP*.** (A) Schematic showing the cell types used for pairwise comparison of gene expression. Phenotypically defined hematopoietic stem and progenitor compartments with potential LSC activity were sorted and compared between healthy and AML individuals. The symbol “Δ” refers to the gene expression differences between groups in each phenotypically defined compartment: LT-HSCs, ST-HSCs, and GMPs. (B) Hierarchical clustering of the 50 most significantly dysregulated genes in 7 AML in phenotypically defined LT-HSCs, ST-HSCs, and GMPs of AML patients compared with HC. Heat maps of log<sub>2</sub>-transformed gene expression levels are shown (top). Position of *IL1RAP* is indicated. Venn diagram (bottom) shows the number of differentially expressed genes that are shared between, or restricted to, specific compartments between AML samples and HC. The numbers represent the total of up- or down-regulated genes in each pairwise comparison. Genes in the triple intersection (common overlap) are listed. Red and green arrows indicate overexpression and down-regulation in the AML samples, respectively. (C) Validation of *IL1RAP* mRNA expression in LT-HSCs, ST-HSCs, and GMPs. Yellow bars represent expression levels in the gene expression array (n = 4 for LT-HSCs, n = 5 for ST-HSCs, and n = 6 for GMPs). Blue bars represent mRNA levels determined by quantitative RT-PCR in amplified RNA (n = 2). Red bars represent the mRNA levels measured by quantitative RT-PCR from unamplified cDNA (n = 1 for LT-HSCs and n = 2 for ST-HSCs and GMPs). mRNA levels were normalized to GAPDH. Fold change compared with HC is shown.



(supplemental Figure 3B). To further characterize the cell populations used for gene expression comparison, we performed FISH in sorted AML-LT-HSCs and AML-ST-HSCs. We found that  $-7/7q-$  was present in the majority of cells (68% in LT-HSCs, SD 34%; and 92% in ST-HSCs, SD 10%), indicating that these earliest definable cellular compartments were indeed part of the abnormal clone (supplemental Figure 4).

Among the 11 intersecting genes, the *IL1RAP* was consistently one of the most statistically significant differentially expressed genes in LT-HSCs, ST-HSCs, and GMPs of AML patients with monosomy 7. When we increased the stringency of the cut-off criteria, *IL1RAP* and *IL-8* remained in the intersection as the 2 most significantly up-regulated genes (supplemental Figure 5). Notably, when we compared unfractionated blast cells of patients with  $-7/7q-$  AML with healthy CD34<sup>+</sup> cells, there was no difference in *IL1RAP* mRNA expression (supplemental Figure 6), suggesting that *IL1RAP* plays a role specifically in immature stem and progenitor cells. We confirmed *IL1RAP* and *RASGRP3* overexpression, as well as *NFIA* down-regulation in sorted LT-HSCs, ST-HSCs, and GMPs by quantitative RT-PCR on the same mRNA samples examined by microarray analysis, as well as samples of additional patients (n = 2; Figure 1C; supplemental Figure 7). We decided to focus on *IL1RAP* for further studies, as *IL1RAP* has previously been implicated in the regulation of hematopoietic cells, and its expression on the cell surface may permit direct therapeutic targeting as well as use as a diagnostic marker.<sup>27-29</sup>

**IL1RAP protein is aberrantly expressed on stem and progenitor cells of AML patients with  $-7/7q-$**

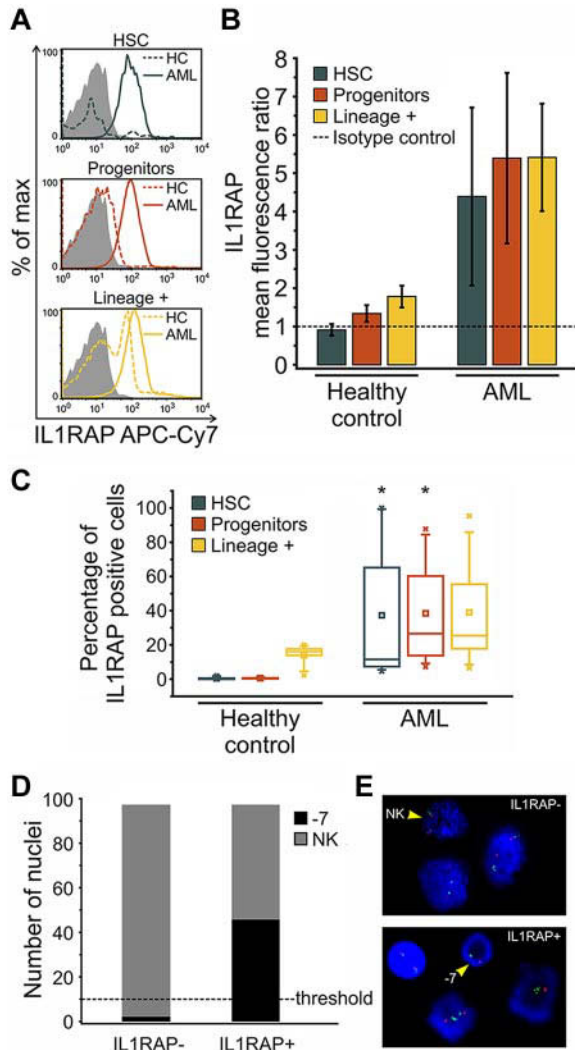
To validate the finding of *IL1RAP* overexpression at the protein level, we stained HSCs and progenitors from AML patients with  $-7/7q-$  with an *IL1RAP*-directed antibody and measured *IL1RAP* expression by flow cytometry. We found that HSCs and progenitors of AML patients expressed *IL1RAP* at the protein level, whereas

HSCs and progenitors from HCs did not show detectable *IL1RAP* surface protein expression (Figure 2A-B). We determined the percentage of *IL1RAP*-expressing cells within the subpopulations of HSCs, progenitors, as well as lineage-positive cells as a more mature cell population. Although none of the HC HSCs or progenitors contained significant numbers of *IL1RAP*<sup>+</sup> cells, HSCs and progenitors of AML patients displayed a highly significant percentage of *IL1RAP*-expressing cells (37.3%, *P* = .006, and 38.5%, *P* = .002, respectively; Figure 2C). In contrast, the lineage-positive cell fraction of AML patients contained only moderately more *IL1RAP*-positive cells than HCs, and this difference was not significant (*P* = .149; Figure 2C).

To investigate whether aberrant *IL1RAP* expression is indeed a hallmark of immature cells that are part of the AML clone, we sorted *IL1RAP*<sup>+</sup> and *IL1RAP*<sup>-</sup> cell fractions of a patient with monosomy 7 and performed FISH analysis. Strikingly, 47% of the *IL1RAP*-positive cells harbored monosomy 7, whereas *IL1RAP*-negative cells did not show the cytogenetic aberration at all above thresholds (Figure 2D-E). This observation was confirmed in another patient with 7q- deletion (data not shown), indicating that the occurrence of the clonotypic  $-7/7q-$  aberration is indeed restricted to *IL1RAP*-expressing cells and that *IL1RAP* expression is a consistent feature of the cells, that are part of the  $-7/7q-$  clone.

**IL1RAP is overexpressed on stem cells of patients with normal karyotype AML and with high-risk MDS**

To evaluate whether *IL1RAP* overexpression is a unique feature of AML patients with  $-7/7q-$ , we examined gene expression in other subtypes of AML. We isolated LT-HSCs, ST-HSCs, and GMPs from AML patients with normal karyotype and determined *IL1RAP* expression. We found mRNA levels of *IL1RAP* to be 3.8-fold up-regulated in HSCs compared with HCs (Figure 3A). These data indicate that overexpression of *IL1RAP* is not unique to  $-7/7q-$  AML but also occurs in other subsets of AML, suggesting that

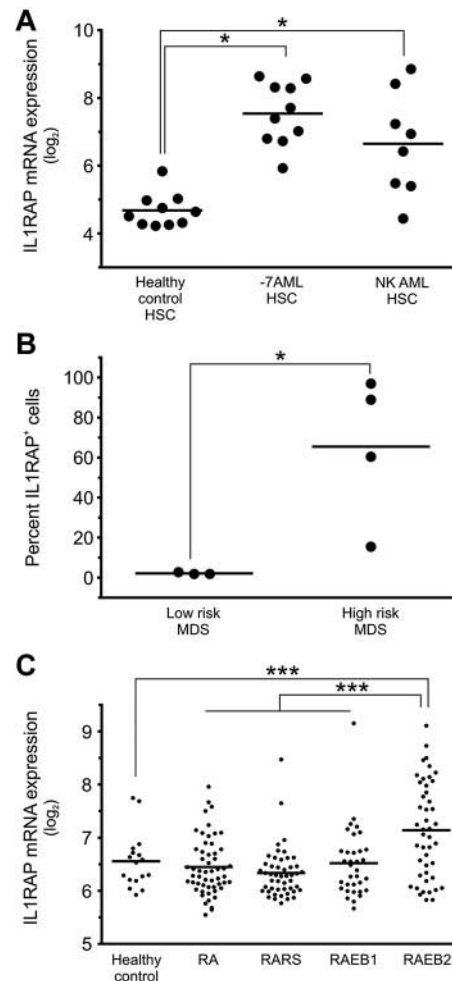


**Figure 2. IL1RAP protein is aberrantly expressed on distinct stem and progenitor cell compartments of AML patients with  $-7/7q-$ .** Detection of IL1RAP expression at the protein level by flow cytometry in bone marrow-derived cells from HCs (n = 5) and AML patients with  $-7/7q-$  (n = 8). (A) Representative histograms show the distribution of IL1RAP protein (cell surface) expression (fluorescence intensity) within phenotypically defined cell compartments of HC (dotted line) and AML (solid line) samples measured using IL1RAP antibody. Gray histograms correspond to the isotype control. (B) Ratios of IL1RAP geometric mean fluorescence intensity relative to the isotype control (arbitrary unit = 1, indicated by the dotted line) for HSCs in blue, progenitors in red, and lineage-positive cells in yellow. Error bars represent SD. (C) Box-and-whisker plots represent the percentage of IL1RAP-positive cells in each cellular compartment, phenotypic HSCs in blue, progenitors in red, and lineage-positive cells in yellow, in HC and AML bone marrow. An isotype control was used to define positive expression in each experiment. The central box represents the values from the 25th to 75th percentile. The middle square represents the mean; and horizontal line, median. A line extends from the minimum to the maximum value. Black star indicates significant difference with HC counterparts. (D) FISH of sorted IL1RAP-positive and IL1RAP-negative cells of an AML patient bearing monosomy 7 hybridized with the Vysis LSI D7S486 (7q31) SpectrumOrange/CEP 7 SpectrumGreen Probe. Bar graph represents the number of nuclei with normal karyotype (NK) and monosomy 7 ( $-7$ ) for each group (n = 100 nuclei analyzed per group).  $P < .001$  ( $\chi^2$ ). The scoring threshold is indicated. (E) Representative FISH image. The arrows indicate a NK FISH pattern with 2 individual green (centromere chromosome 7) and 2 orange (7q31) signals per nuclear section (top), and monosomy 7 ( $-7$ ) with 1 green and 1 orange signal (bottom), respectively.

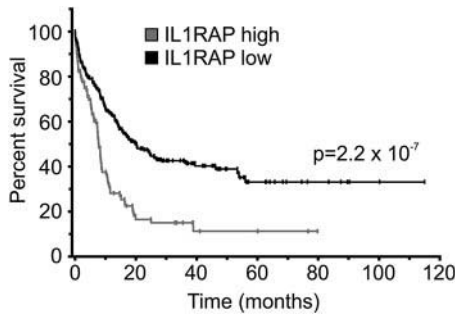
overexpression of *IL1RAP* might be part of a more common pathogenetic mechanism effective in immature stem and progenitor cell populations in AML.

MDSs are heterogeneous hematologic disorders that can progress to AML. Transformation to overt AML is particularly frequent

in high-risk MDS as defined by the new WHO classification.<sup>30,31</sup> To test whether IL1RAP plays a role in MDS, we sorted and analyzed Lin<sup>-</sup>CD34<sup>+</sup>CD38<sup>-</sup> HSCs from patients with MDS. We found that high-risk MDS patients displayed aberrant IL1RAP expression on their stem cells (average, 64%; range, 17%-97%), whereas stem cells of low-risk MDS patients did not show a detectable fraction of IL1RAP-positive stem cells (Figure 3B). When we analyzed gene expression data from enriched CD34<sup>+</sup> cells of a larger cohort of MDS patients,<sup>23</sup> we found that the subset of patients with refractory anemia with excess blast type 2 had significantly higher IL1RAP expression levels compared with patients with refractory anemia, refractory anemia with ringed sideroblasts, and refractory anemia with excess blast type 1 ( $P = 4.23 \times 10^{-5}$ ), and compared with CD34<sup>+</sup> cells from HCs ( $P = 7.4 \times 10^{-4}$ ; Figure 3C). These observations suggest that aberrant IL1RAP expression on stem cells discriminates high-risk from low-risk MDS and may thus be associated with inferior outcome.



**Figure 3. IL1RAP is overexpressed on stem cells of patients with AML with monosomy 7, AML with normal karyotype, and high-risk MDS.** (A) *IL1RAP* gene expression in phenotypically defined HSCs (Lin<sup>-</sup>CD34<sup>+</sup>CD38<sup>-</sup>) in HCs (n = 10), AML with monosomy 7 (n = 10), and AML with normal karyotype (n = 8). \*Differences compared with the HC group are statistically significant ( $P < .05$  in both cases). (B) IL1RAP protein expression was determined in Lin<sup>-</sup>CD34<sup>+</sup>CD38<sup>-</sup> cells in MDS patients (n = 7: 3 with low-risk and 4 with high-risk MDS). An isotype control was used to define IL1RAP positivity in each experiment. Percentages of IL1RAP<sup>+</sup> cells are shown. \* $P < .05$ . (C) *IL1RAP* mRNA expression in CD34<sup>+</sup> cells of different types of MDS (n = 183 total) with refractory anemia (RA), refractory anemia with ringed sideroblasts (RARS), and refractory anemia with excess blast types 1 (RAEB1) and 2 (RAEB2), and CD34<sup>+</sup> cells of HCs (n = 17). \*\*\* $P < .001$ .



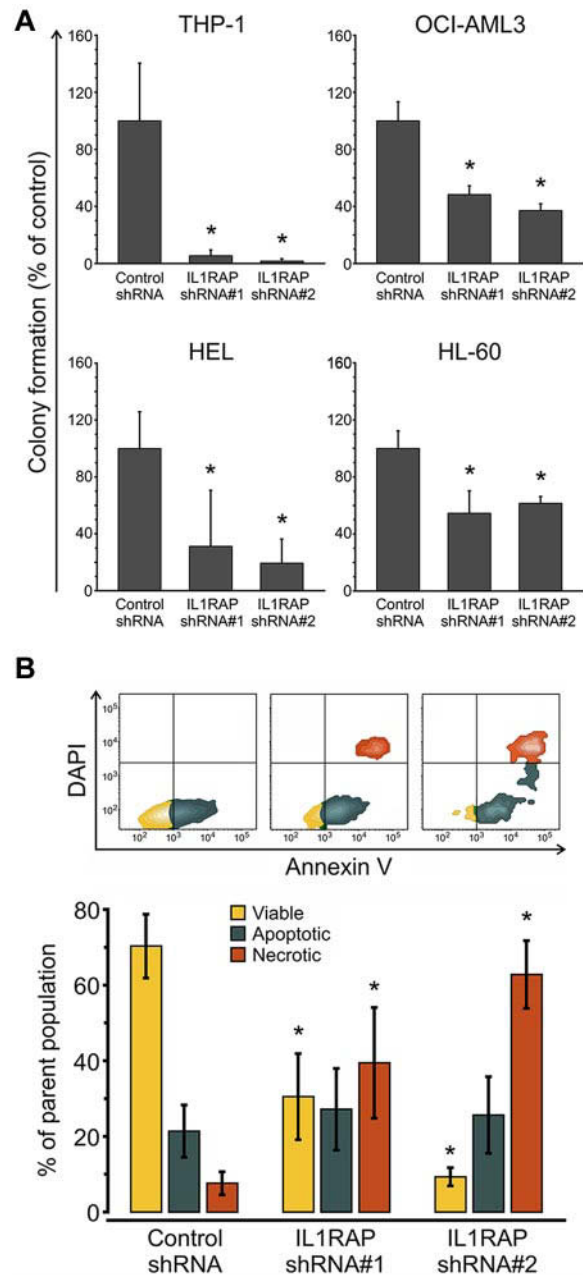
**Figure 4. IL1RAP overexpression is associated with poor clinical outcome in AML with normal karyotype.** Combined survival analysis of 3 cohorts of AML patients with normal karyotype (n = 317) dichotomized for *IL1RAP* gene expression levels at the 75th percentile. Overall survival of patients with low and high *IL1RAP* expression is shown in black and gray, respectively. Statistical significance is indicated.

**IL1RAP overexpression is independently associated with poor clinical outcome**

We noted that phenotypic HSCs in AML with normal karyotype showed substantial variability in the expression of *IL1RAP* (Figure 3A). Some patients displayed *IL1RAP* levels as high as -7/7q- patients, whereas others had *IL1RAP* levels not distinguishable from HCs. We sought to examine whether *IL1RAP* expression levels were associated with known clinical or molecular parameters. For this purpose, we analyzed 3 large published datasets of patients with AML with normal karyotype, for which gene expression data of leukemic bulk (mononuclear) cells and time-to-event data were available (GSE10358, GSE12417 [U133A], GSE12417 [U133plus2]).<sup>32,33</sup> As the top quartile of patients with normal karyotype had *IL1RAP* expression levels very similar to the ones we had observed in patients with -7/7q- (Figure 3A), we decided to use the 75th percentile to dichotomize patients with normal karyotype into “IL1RAP high” and “IL1RAP low” expressers. We compared the overall survival of AML patients with low versus high *IL1RAP*, and observed that, in each of the 3 different datasets, high levels of *IL1RAP* expression were associated with inferior overall survival (supplemental Figure 8A-C). Overall survival (irrespective of *IL1RAP* status) in all examined datasets was very similar, with superimposable survival curves (supplemental Figure 8D), suggesting that the patient populations in these datasets and their clinical outcomes were comparable and could be combined for further analyses. Consistent with the analyses of the individual datasets, the evaluation of the combined set of AML patients with normal karyotype from the GSE10358 and GSE12417 (total n = 317) confirmed that high *IL1RAP* levels were associated with inferior overall survival ( $P = 2.2 \times 10^{-7}$  [log-rank]; hazard ratio [HR] = 2.59; 95% CI, 1.81-3.72); median survival (7.82 months for IL1RAP high, 20 months for IL1RAP low; 5-year survival rate: 11.3% for IL1RAP high, 33.1% for IL1RAP low; Figure 4). To assess whether the impact of *IL1RAP* expression on overall survival within AML with normal karyotype was independent of other prognostic factors, we performed multivariate analysis using a Cox regression model. In this analysis, high IL1RAP status remained an independent prognostic factor ( $P = .002$ ; HR = 3.17; 95% CI, 1.52-6.63). Notably, in this analysis, *IL1RAP* was an even stronger prognostic factor than *FLT3* mutation status ( $P = .006$ ; HR = 3.44; 95% CI, 1.29-4.59), which is a known independent covariate and used in the clinic for risk stratification of patients with normal karyotype.

**Knockdown of IL1RAP decreases clonogenicity and increases cell death of AML cells**

To determine whether *IL1RAP* is functionally important for the malignant growth of AML cells, we initially performed knockdown experiments in THP1 cells, which express high levels of *IL1RAP*. We used lentivirally expressed shRNAs directed against *IL1RAP* and coexpressing GFP as a marker. We tested and identified 2 shRNA constructs, which caused a decrease of *IL1RAP* expression by 49% and 88%, respectively (supplemental Figure 9). We transduced THP1 cells with these lentiviral shRNAs or with a nonsilencing control, and subjected sorted GFP-positive, annexin V-negative,



**Figure 5. IL1RAP knockdown decreases clonogenic potential and leads to increased cell death of AML cells.** (A) Colony formation assays in semisolid methylcellulose media of AML cells (THP-1, OCI-AML3, HEL, and HL-60) infected with control and 2 *IL1RAP*-directed shRNAs. Data are mean  $\pm$  SD. \* $P < .05$ . (B) Analysis of apoptosis/necrosis with annexin V/DAPI in THP-1 cells infected with control and *IL1RAP* shRNAs. Top panel: FACS contour plots of 1 representative experiment. Bottom panel: Mean  $\pm$  SD of 3 independent experiments. \* $P < .05$ .

DAPI-negative cells to clonogenic assays. Knockdown of IL1RAP led to a significant ( $P < .05$ ) 94% and 98% inhibition of leukemic colony formation of THP1 cells compared with the nonsilencing control (Figure 5A). Moreover, although the cell cycle state was not significantly affected (supplemental Figure 11), IL1RAP knockdown caused a significant increase of cellular death as determined by annexin V/DAPI staining (Figure 5B). Cell death mainly occurred between 24 and 48 hours after infection (supplemental Figure 12). We examined further AML cell lines and found that shRNA-mediated inhibition of IL1RAP reduced clonogenicity by 51.5% (shRNA#1) and 62% (shRNA#2) in OCI-AML3 cells ( $P < .05$ ), by 69% (shRNA#1) and 81% (shRNA#2) in HEL cells ( $P < .05$ ), and by 45% (shRNA#1) and 38.5% (shRNA#2) in HL-60 cells ( $P < .05$ ; Figure 5A; supplemental Figure 9). These results demonstrate that IL1RAP is functionally relevant in AML and that reduction of IL1RAP leads to a decrease of the clonogenic capacity across different AML cell lines. These findings suggest that targeting IL1RAP could be used as a therapeutic strategy to inhibit AML cells.

## Discussion

Transcription factors are frequently disrupted in AML,<sup>34,35</sup> and we and others have previously shown dysregulated transcription in AML, including in stem and progenitor cells.<sup>18,26,32,36-38</sup> However, experimental determination of dysregulated gene expression in AML is challenging because of patient-to-patient heterogeneity as well as cellular heterogeneity within the leukemic cells of individual patients. In addition, LSCs have recently been reported to reside in different phenotypic stem and progenitor compartments in AML and at relatively low frequencies.<sup>3,5</sup> In this study, we identified IL1RAP as a novel candidate for stem cell-targeted therapy and diagnosis in AML. We applied an experimental approach, which has features that set it apart from previously used strategies. First, in contrast to several other studies, we included rigorous lineage depletion, including myeloid markers in our strategy, in an attempt to focus on the most immature definable stem cell populations and to most effectively reduce experimental variation caused by cellular heterogeneity. We show that this strategy resulted in a more stringent selection of cellular subpopulations and excluded a significant additional fraction of more mature cells in stem and progenitor populations compared with HSCs sorted without lineage depletion. Second, to decrease experimental noise because of interpatient variability, we initially focused on a genetically defined subset of AML, patients with loss/deletions of chromosome 7 as the sole aberration. Third, we performed parallel transcriptional analysis of 3 different stem and progenitor cell types (LT-HSCs, ST-HSCs, and GMP) and compared them with their respective normal counterparts to circumvent the uncertainty about the precise cellular localization and identity of LSCs and pre-LSCs, and to identify commonly dysregulated transcription, independent of the various differentiation stages at which diverse pre-LSC and LSC types may reside. Using this approach, we were able to identify 11 genes commonly dysregulated in LT-HSCs, ST-HSCs, and GMP in AML with  $-7/7q-$ , which included *IL1RAP*. Of note, *IL1RAP* could not be found differentially expressed in unfractionated leukemia cells. Some of the differentially expressed genes we found in individual compartments, in particular in AML-GMP, showed a partial overlap with the results of previous analyses using less rigorous sorting (eg, *CD97*, *CD123*, *PDK1*, *FYB*, *TFRC*, and *HMGNS5*),<sup>4,6,10</sup> thereby

validating our findings. Interestingly, we found IL1RAP overexpression on stem cells of some patients with another subtype of leukemia, AML with normal karyotype, as well as in patients with high-risk MDSs, but not in patients with low-risk MDS. It is tempting to speculate that IL1RAP expression on MDS-HSCs may precede transformation to overt AML. High *IL1RAP* levels were independently associated with poor clinical outcome in AML, supporting the biologic significance of IL1RAP in the clinical setting. Inhibition of IL1RAP led to a significant reduction of growth and colony-forming capacity of AML cells *ex vivo*, indicating that IL1RAP is functionally relevant in AML and may be a promising diagnostic and therapeutic target. The finding that IL1RAP was preferentially overexpressed in immature HSCs and the observation that all AML cells carrying the clonotypic  $-7/7q-$  aberration overexpressed IL1RAP suggest that IL1RAP overexpression may be an early event in AML pathogenesis.

IL1RAP was recently reported to be overexpressed in bcr-abl-positive CD34<sup>+</sup> cells of patients with chronic myelogenous leukemia, and its targeting by cytotoxic T cells inhibited leukemia cell proliferation *in vitro*.<sup>29</sup> This suggests that IL1RAP overexpression is implicated in the molecular pathogenesis of different myeloid malignancies, including chronic myelogenous leukemia and subsets of AML and MDS. IL1RAP mediates the response to IL-1, IL-33, and IL-36 and has been shown to regulate the inflammatory response, as well as activation of T lymphocytes and mast cells.<sup>28,39-41,42</sup> Previous studies have shown increased IL1 $\beta$  production in patients with AML.<sup>43,44</sup> IL1 $\beta$  is produced as an autocrine factor in AML and confers apoptosis resistance to AML blast cells.<sup>45</sup> Interestingly, IL1R antagonist (IL1Ra) was previously shown to have an inhibitory effect on the growth of AML blasts,<sup>46</sup> and it is available as a drug (anakinra) with promising safety data.<sup>42</sup> Our data suggest that aberrant expression of IL1RAP on stem and progenitor cells in AML and high-risk MDS may mediate similar effects and cytokine responsiveness in immature cell populations in AML. The use of IL1Ra could be of particular benefit for AML patients with aberrant IL1RAP expression on stem and progenitor cells. Of note, IL1RAP, as opposed to IL1R1, is only expressed on a subset of blood cell types; thus, its targeting in AML may be more specific and have less severe side effects. As recent data demonstrate that IL1RAP can also associate with and enhance signaling of other receptors,<sup>47,48</sup> therapeutic targeting of IL1RAP may offer the opportunity to simultaneously inhibit signaling through multiple pathways in AML.

Several markers have been proposed as leukemia stem cell markers, such as CD123,<sup>6</sup> CD44,<sup>7</sup> CLL-1,<sup>8</sup> TIM3,<sup>9,49</sup> CD25,<sup>50</sup> CD32,<sup>50</sup> CD96,<sup>11</sup> and CD47.<sup>4</sup> Some of these surface proteins have been reported to enrich for LSCs and to be useful for their therapeutic elimination in preclinical models. Because AML is a heterogeneous disease, different genes might need to be targeted in different subtypes to eradicate the disease. Our data show that diverse sets of molecules are aberrantly expressed in different immature stem and progenitor subsets of individual patients, with only very limited overlap, thus reflecting the cellular heterogeneity of the disease. We found that *IL1RAP* was one of the few genes aberrantly overexpressed across different stem and progenitor subsets, including putative pre-LSC populations, making it a particularly promising therapeutic and diagnostic target, conceivably in combination with 1 or more of the markers previously listed in this paragraph. Further studies will be required to assess the precise role of IL1RAP overexpression and potentially disturbed downstream signaling in the molecular pathogenesis of AML stem cells. Our results provide a rationale for further evaluating the

therapeutic effects of targeting IL1RAP and its specificity for AML stem cells in vitro as well as in preclinical in vivo studies. The examination of IL1RAP surface expression by FACS in larger cohorts is warranted to determine its potential clinical usefulness as a prognostic marker.

In addition to IL1RAP, our study provides an inventory of further targets aberrantly expressed in immature stem and progenitor cells in AML with  $-7/7q-$ . These include, for instance, RAS guanyl-releasing protein 3 and *IL-8*, both of which have previously been implicated in oncogenic signaling<sup>51-53</sup> and may offer further opportunities for the development of stem cell-targeted therapies. Functional evaluation of these candidates is warranted in future studies. Our experimental approach may also be used for the characterization of transcriptional dysregulation in stem and progenitor cells in other subtypes of AML.

## Acknowledgments

The authors thank the ECOG for providing specimens from the ECOG tissue bank, Guillermo Simkin and Swathi-Rao Narayana-gari from the Einstein Stem Cell FACS and Xenotransplantation Facility (NYSTEM, C024172) for expert technical assistance, and the Albert Einstein Genomics Core Facilities.

This work was supported by the National Institutes of Health grant U24 CA114737-05S3 (E.P.), Leukemia & Lymphoma Research United Kingdom (J.B. and A.P.), a NYSTEM research grant (C024350, U.S.), and an American Cancer Society–J. T. Tai &

Company Inc postdoctoral fellowship (B.W.). U.S. is the recipient of a Howard Temin Award of the National Cancer Institute (R00 CA131503) and a Medical Research Award of the Gabrielle's Angel Foundation for Cancer Research. U.S. is the Diane and Arthur B. Belfer Faculty Scholar in Cancer Research of the Albert Einstein College of Medicine.

## Authorship

Contribution: L.B. designed and performed research, analyzed data, made figures, and wrote the manuscript; B.W. and C.M. performed research and analyzed data; B.B. analyzed data, performed statistical analyses, and made figures; L.Z., T.I.T., R.F.S., and S.B.-N. performed research; S.P. contributed vital reagents and analyzed and interpreted data; A.P. and J.B. analyzed data; E.P. contributed vital reagents, collected data, and analyzed and interpreted data; R.P.K. performed research and collected and analyzed data; L.C., H.F.F., P.L.G., and M.S.T. collected and analyzed data; C.S. and C.S.M. performed research and analyzed and interpreted data; A.V. designed and performed research and analyzed and interpreted data; and U.S. designed the research, analyzed and interpreted data, and wrote the manuscript.

Conflict-of-interest disclosure: The authors declare no competing financial interests.

Correspondence: Ulrich Steidl, Albert Einstein College of Medicine, Chanin Bldg, Rm 606, 1300 Morris Park Ave, Bronx, NY 10461; e-mail: ulrich.steidl@einstein.yu.edu.

## References

- Passegué E, Jamieson CH, Ailles LE, Weissman IL. Normal and leukemic hematopoiesis: are leukemias a stem cell disorder or a reacquisition of stem cell characteristics? *Proc Natl Acad Sci U S A*. 2003;100(Suppl 1):11842-11849.
- Rosen JM, Jordan CT. The increasing complexity of the cancer stem cell paradigm. *Science*. 2009;324(5935):1670-1673.
- Sarry JE, Murphy K, Perry R, et al. Human acute myelogenous leukemia stem cells are rare and heterogeneous when assayed in NOD/SCID/IL2Rgammac-deficient mice. *J Clin Invest*. 2011;121(1):384-395.
- Majeti R, Chao MP, Alizadeh AA, et al. CD47 is an adverse prognostic factor and therapeutic antibody target on human acute myeloid leukemia stem cells. *Cell*. 2009;138(2):286-299.
- Eppert K, Takenaka K, Lechman ER, et al. Stem cell gene expression programs influence clinical outcome in human leukemia. *Nat Med*. 2011;17(9):1086-1093.
- Jordan CT, Upchurch D, Szilvassy SJ, et al. The interleukin-3 receptor alpha chain is a unique marker for human acute myelogenous leukemia stem cells. *Leukemia*. 2000;14(10):1777-1784.
- Jin L, Hope KJ, Zhai Q, Smadja-Joffe F, Dick JE. Targeting of CD44 eradicates human acute myeloid leukemic stem cells. *Nat Med*. 2006;12(10):1167-1174.
- van Rhenen A, van Dongen GA, Kelder A, et al. The novel AML stem cell associated antigen CLL-1 aids in discrimination between normal and leukemic stem cells. *Blood*. 2007;110(7):2659-2666.
- Jan M, Chao MP, Cha AC, et al. Prospective separation of normal and leukemic stem cells based on differential expression of TIM3, a human acute myeloid leukemia stem cell marker. *Proc Natl Acad Sci U S A*. 2011;108(12):5009-5014.
- Saito Y, Kitamura H, Hijikata A, et al. Identification of therapeutic targets for quiescent, chemotherapy-resistant human leukemia stem cells. *Sci Transl Med*. 2010;3(17):17ra9.
- Hosen N, Park CY, Tatsumi N, et al. CD96 is a leukemic stem cell-specific marker in human acute myeloid leukemia. *Proc Natl Acad Sci U S A*. 2007;104(26):11008-11013.
- Huntly BJP, Shigematsu H, Deguchi K, et al. MOZ-TIF2, but not BCR-ABL, confers properties of leukemic stem cells to committed murine hematopoietic progenitors. *Cancer Cell*. 2004;6(6):587-596.
- Krivtsov AV, Twomey D, Feng Z, et al. Transformation from committed progenitor to leukaemia stem cell initiated by MLL-AF9. *Nature*. 2006;442(7104):818-822.
- Somervaille TC, Cleary ML. Identification and characterization of leukemia stem cells in murine MLL-AF9 acute myeloid leukemia. *Cancer Cell*. 2006;10(4):257-268.
- Wang Y, Krivtsov AV, Sinha AU, et al. The Wnt/beta-catenin pathway is required for the development of leukemia stem cells in AML. *Science*. 2010;327(5973):1650-1653.
- Woo KS, Kim KE, Kim KH, et al. Deletions of chromosome arms 7p and 7q in adult acute myeloid leukemia: a marker chromosome confirmed by array comparative genomic hybridization. *Cancer Genet Cytogenet*. 2009;194(2):71-74.
- Haase D, Germing U, Schanz J, et al. New insights into the prognostic impact of the karyotype in MDS and correlation with subtypes: evidence from a core dataset of 2124 patients. *Blood*. 2007;110(13):4385-4395.
- Steidl U, Rosenbauer F, Verhaak RGW, et al. Essential role of Jun family transcription factors in PU.1 knockdown-induced leukemic stem cells. *Nat Genet*. 2006;38(11):1269-1277.
- Saeed AI, Bhagabati NK, Braisted JC, et al. TM4 microarray software suite. *Methods Enzymol*. 2006;411:134-193.
- Pfaffl MW. A new mathematical model for relative quantification in real-time RT-PCR. *Nucleic Acids Res*. 2001;29(9):e45.
- Chan SM, Olson JA, Utz PJ. Single-cell analysis of siRNA-mediated gene silencing using multiparameter flow cytometry. *Cytometry A*. 2006;69(2):59-65.
- Will B, Kawahara M, Luciano JP, et al. Effect of the nonpeptide thrombopoietin receptor agonist Eltrombopag on bone marrow cells from patients with acute myeloid leukemia and myelodysplastic syndrome. *Blood*. 2009;114(18):3899-3908.
- Pellagatti A, Cazzola M, Giagounidis A, et al. Deregulated gene expression pathways in myelodysplastic syndrome hematopoietic stem cells. *Leukemia*. 2010;24(4):756-764.
- Manz MG, Miyamoto T, Akashi K, Weissman IL. Prospective isolation of human clonogenic common myeloid progenitors. *Proc Natl Acad Sci U S A*. 2002;99(18):11872-11877.
- Jamieson CH, Ailles LE, Dylla SJ, et al. Granulocyte-macrophage progenitors as candidate leukemic stem cells in blast-crisis CML. *N Engl J Med*. 2004;351(7):657-667.
- Steidl U, Steidl C, Ebralidze A, et al. A distal single nucleotide polymorphism alters long-range regulation of the PU.1 gene in acute myeloid leukemia. *J Clin Invest*. 2007;117(9):2611-2620.
- Lang D, Knop J, Wesche H, et al. The type II IL-1 receptor interacts with the IL-1 receptor accessory protein: a novel mechanism of regulation of IL-1 responsiveness. *J Immunol*. 1998;161(12):6871-6877.
- Ali S, Huber M, Kollwe C, Bischoff SC, Falk W, Martin MU. IL-1 receptor accessory protein is essential for IL-3-induced activation of T lymphocytes and mast cells. *Proc Natl Acad Sci U S A*. 2007;104(47):18660-18665.
- Järås M, Johnels P, Hansen N, et al. Isolation and killing of candidate chronic myeloid leukemia stem cells by antibody targeting of IL-1 receptor



- accessory protein. *Proc Natl Acad Sci U S A*. 2010;107(37):16280-16285.
30. Vardiman JW, Harris NL, Brunning RD. The World Health Organization (WHO) classification of the myeloid neoplasms. *Blood*. 2002;100(7):2292-2302.
  31. Vardiman JW, Thiele J, Arber DA, et al. The 2008 revision of the World Health Organization (WHO) classification of myeloid neoplasms and acute leukemia: rationale and important changes. *Blood*. 2009;114(5):937-951.
  32. Metzeler KH, Hummel M, Bloomfield CD, et al. An 86-probe-set gene-expression signature predicts survival in cytogenetically normal acute myeloid leukemia. *Blood*. 2008;112(10):4193-4201.
  33. Tomasson MH, Xiang Z, Walgren R, et al. Somatic mutations and germline sequence variants in the expressed tyrosine kinase genes of patients with de novo acute myeloid leukemia. *Blood*. 2008;111(9):4797-4808.
  34. Tenen DG. Disruption of differentiation in human cancer: AML shows the way. *Nat Rev Cancer*. 2003;3(2):89-101.
  35. Rosenbauer F, Koschmieder S, Steidl U, Tenen DG. Effect of transcription-factor concentrations on leukemic stem cells. *Blood*. 2005;106(5):1519-1524.
  36. Bullinger L, Döhner K, Bair E, et al. Use of gene-expression profiling to identify prognostic subclasses in adult acute myeloid leukemia. *N Engl J Med*. 2004;350(16):1605-1616.
  37. Valk PJ, Verhaak RG, Beijnen MA, et al. Prognostically useful gene-expression profiles in acute myeloid leukemia. *N Engl J Med*. 2004;350(16):1617-1628.
  38. Majeti R, Becker MW, Tian Q, et al. Dysregulated gene expression networks in human acute myelogenous leukemia stem cells. *Proc Natl Acad Sci U S A*. 2009;106(9):3396-3401.
  39. Volpe F, Clatworthy J, Kaptein A, Maschera B, Griffin AM, Ray K. The IL1 receptor accessory protein is responsible for the recruitment of the interleukin-1 receptor associated kinase to the IL1/IL1 receptor I complex. *FEBS Lett*. 1997;419(1):41-44.
  40. Palmer G, Lipsky BP, Smithgall MD, et al. The IL-1 receptor accessory protein (AcP) is required for IL-33 signaling and soluble AcP enhances the ability of soluble ST2 to inhibit IL-33. *Cytokine*. 2008;42(3):358-364.
  41. Nishida A, Andoh A, Imaeda H, Inatomi O, Shiomi H, Fujiyama Y. Expression of interleukin 1-like cytokine interleukin 33 and its receptor complex (ST2L and IL1RAcP) in human pancreatic myofibroblasts. *Gut*. 2010;59(4):531-541.
  42. Dinarello CA. Interleukin-1 in the pathogenesis and treatment of inflammatory diseases. *Blood*. 2011;117(14):3720-3732.
  43. Preisler HD, Raza A, Kukla C, Larson R, Goldberg J, Browman G. Interleukin-1 beta expression and treatment outcome in acute myelogenous leukemia. *Blood*. 1991;78(3):849-850.
  44. Sakai K, Hattori T, Matsuoka M, et al. Autocrine stimulation of interleukin 1 beta in acute myelogenous leukemia cells. *J Exp Med*. 1987;166(5):1597-1602.
  45. Turzanski J, Grundy M, Russell NH, Pallis M. Interleukin-1beta maintains an apoptosis-resistant phenotype in the blast cells of acute myeloid leukaemia via multiple pathways. *Leukemia*. 2004;18(10):1662-1670.
  46. Rambaldi A, Torcia M, Bettoni S, et al. Modulation of cell proliferation and cytokine production in acute myeloblastic leukemia by interleukin-1 receptor antagonist and lack of its expression by leukemic cells. *Blood*. 1991;78(12):3248-3253.
  47. Chackerian AA, Oldham ER, Murphy EE, Schmitz J, Pflanz S, Kastelein RA. IL-1 receptor accessory protein and ST2 comprise the IL-33 receptor complex. *J Immunol*. 2007;179(4):2551-2555.
  48. Drube S, Heink S, Walter S, et al. The receptor tyrosine kinase c-Kit controls IL-33 receptor signaling in mast cells. *Blood*. 2010;115(19):3899-3906.
  49. Kikushige Y, Shima T, Takayanagi S, et al. TIM-3 is a promising target to selectively kill acute myeloid leukemia stem cells. *Cell Stem Cell*. 2010;7(6):708-717.
  50. Saito Y, Kitamura H, Hijikata A, et al. Identification of therapeutic targets for quiescent, chemotherapy-resistant human leukemia stem cells. *Sci Transl Med*. 2010;2(17):17ra19.
  51. Zheng Y, Liu H, Coughlin J, Zheng J, Li L, Stone JC. Phosphorylation of RasGRP3 on threonine 133 provides a mechanistic link between PKC and Ras signaling systems in B cells. *Blood*. 2005;105(9):3648-3654.
  52. Yang D, Tao J, Li L, et al. RasGRP3, a Ras activator, contributes to signaling and the tumorigenic phenotype in human melanoma. *Oncogene*. 2011;30(45):4590-4600.
  53. Tefferi A, Vaidya R, Caramazza D, Finke C, Lasho T, Pardanani A. Circulating interleukin (IL)-8, IL-2R, IL-12, and IL-15 levels are independently prognostic in primary myelofibrosis: a comprehensive cytokine profiling study. *J Clin Oncol*. 2011;29(10):1356-1363.